

University Consortium for
Evidence **B**ased **A**pproach
to the Emergent Issues in Asia

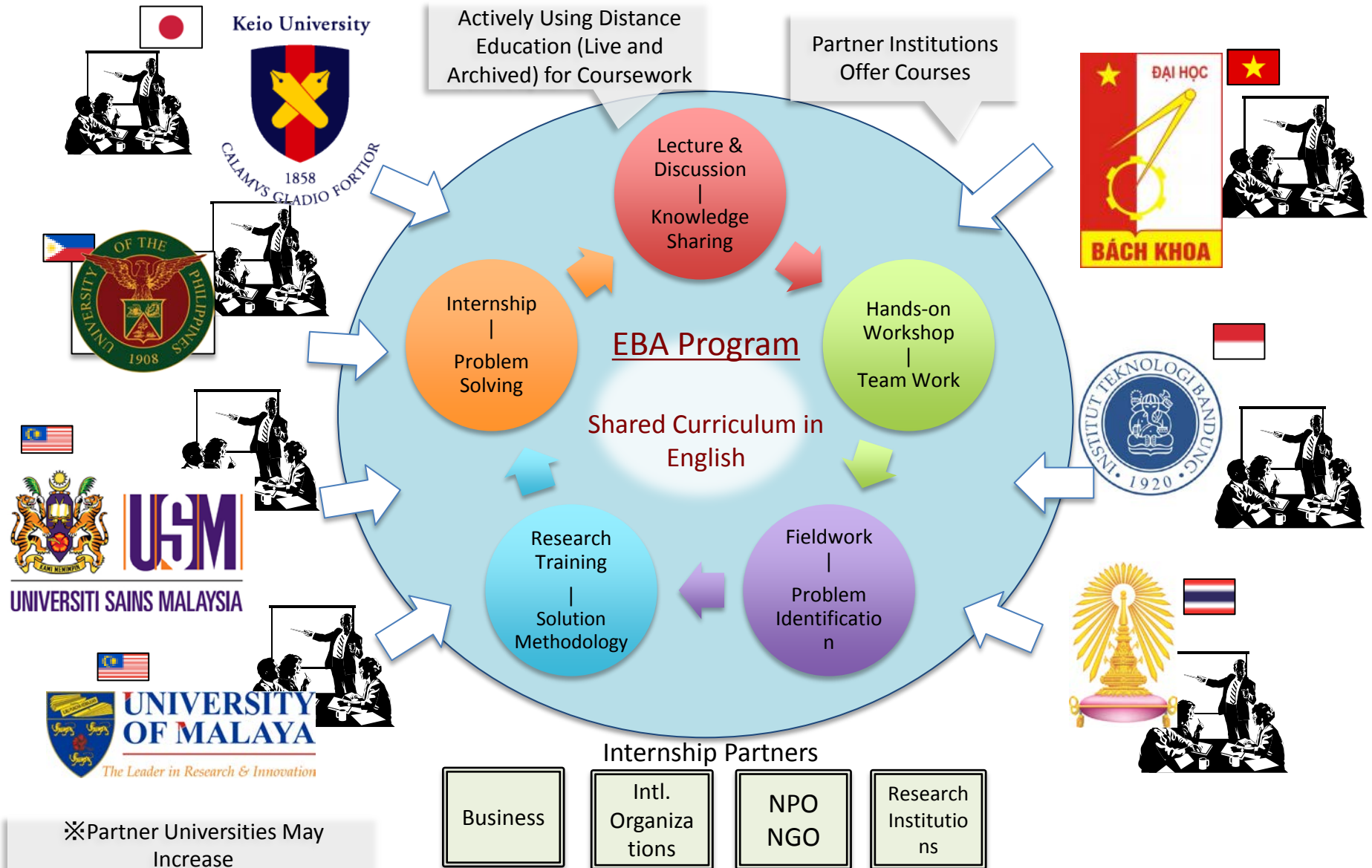


Evidence Based Approach to the Emergent Issues in Asia

for the development of Asian region that harmonizes science and technology, resources, and economy
within the global information society.

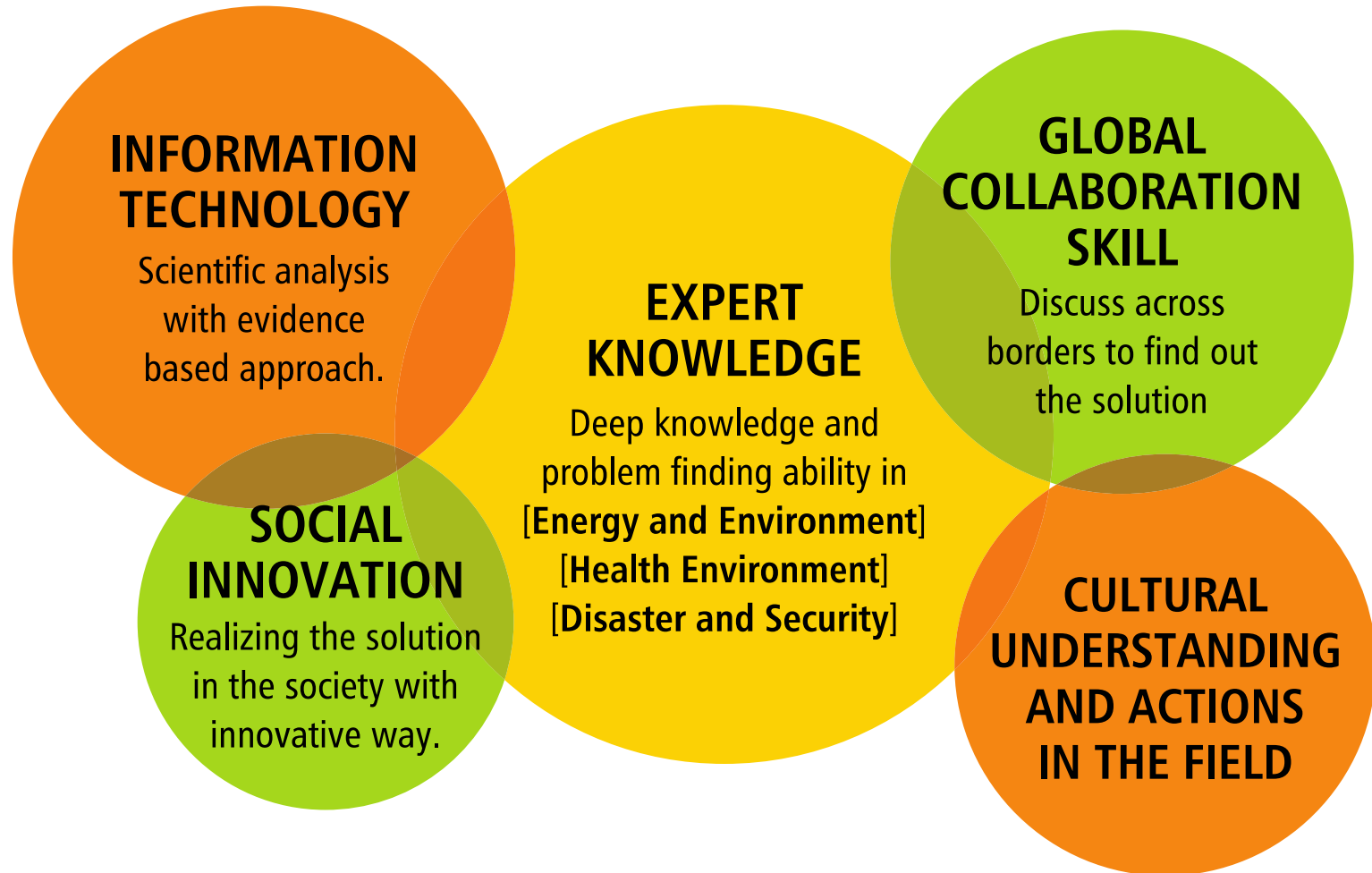
- Emergent Issues in Asia :
〔Energy and Environment〕 〔Health Environment〕 〔Disaster and Security〕
- Evidence Based Approach (EBA) to solve the issues
- Knowledge and Skills to solve the problem based on the deep observation of the field and scientific analysis utilizing “big-data” generated by the information society, shared on the global digital communication infrastructure
- Certificate program for undergraduate and graduate, jointly developed and shared by Japan and ASEAN universities, focusing on EBA. (Pursuing a joint degree program in the future.)
- Accepts about 180 students in 5 years. 420 exchange students in total as a part of the program to offer a real experience in the fields as part of the program.

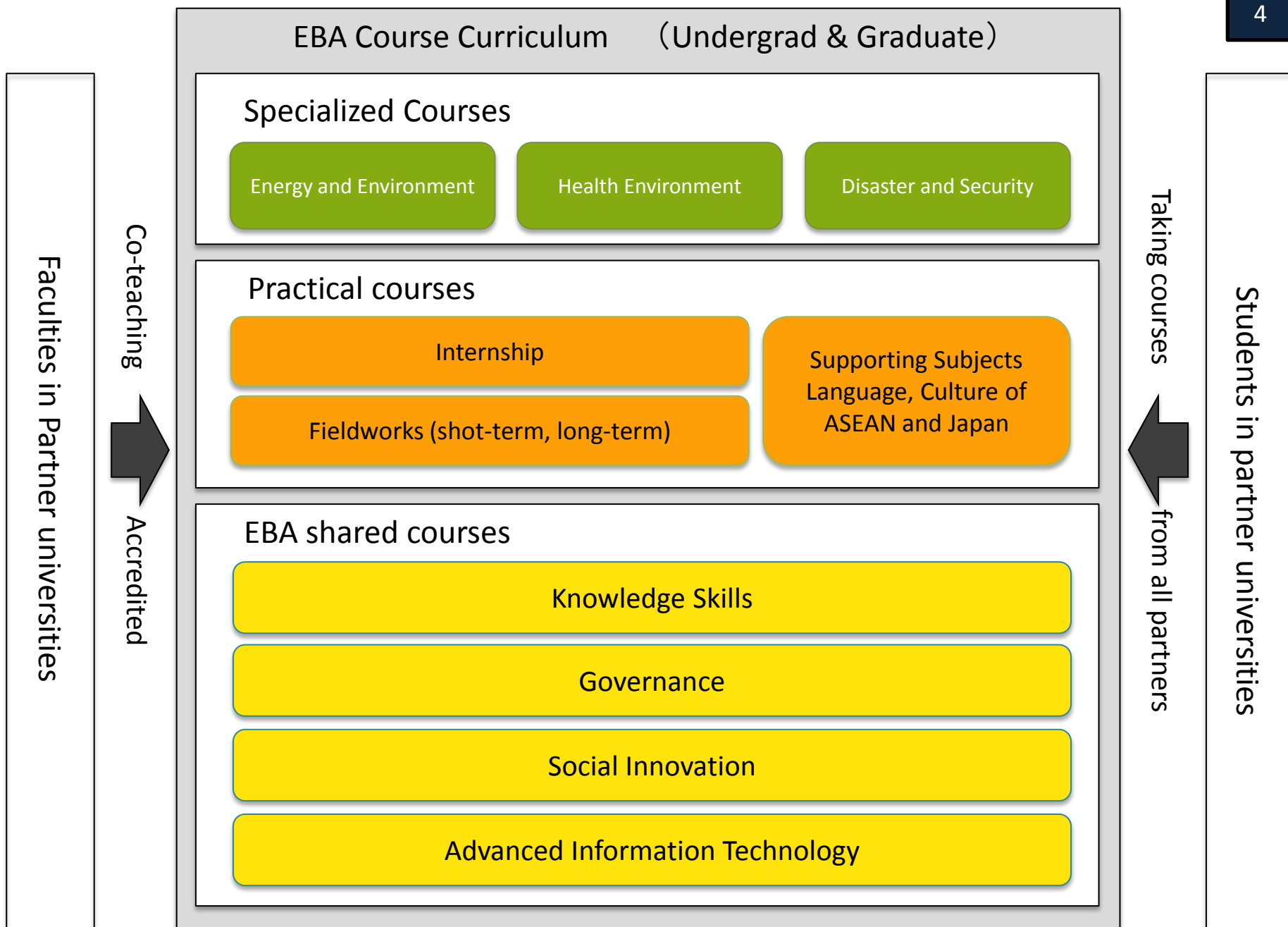
Concept : University Consortium and the Program



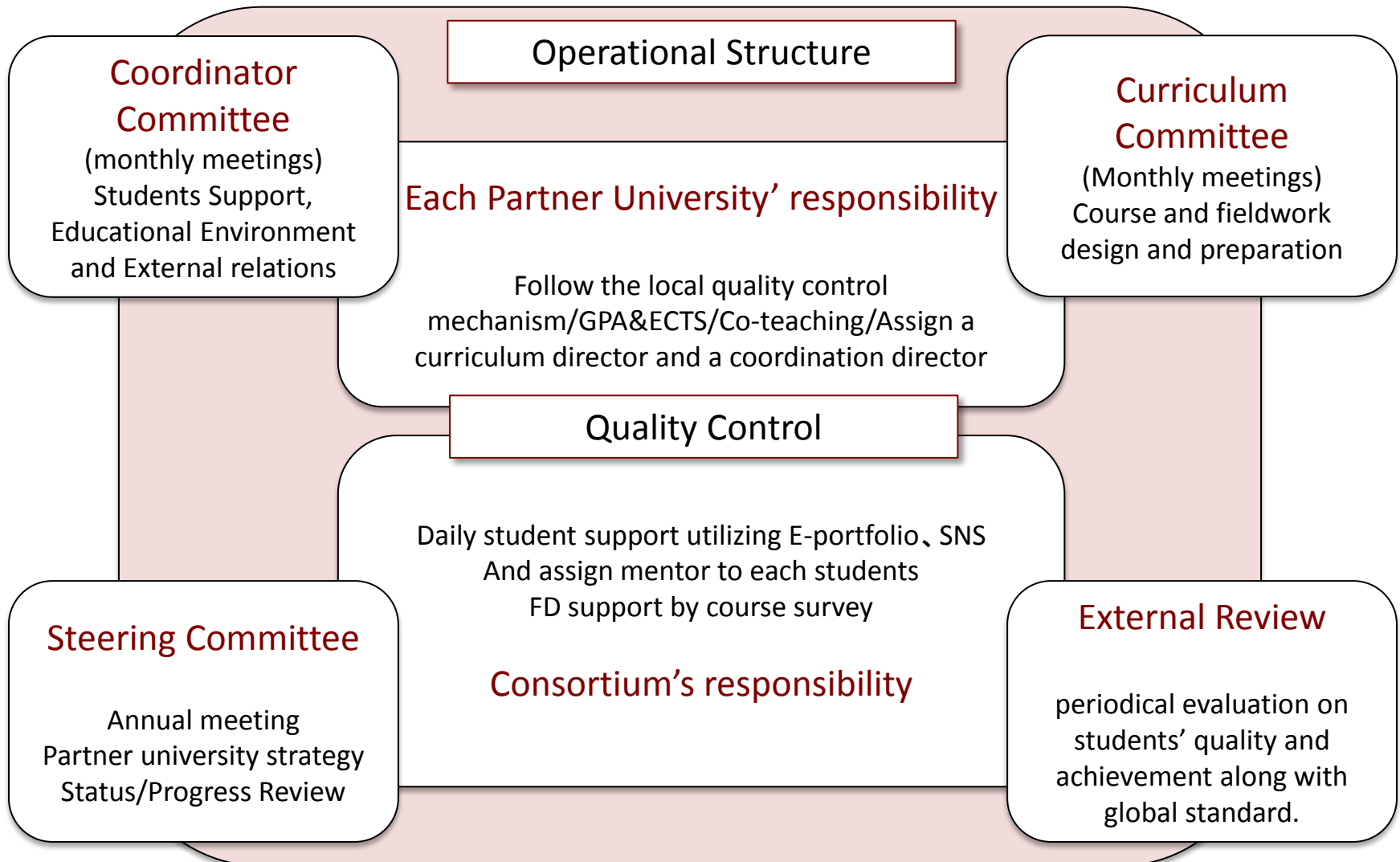
ASEAN EBA Leader

with Resilience, Innovation and Sustainability





Evidence Based Approach Quality Control and Operation



EBA Consortium : Summary

- Certificate for undergrad and grad of
 - Resilience, Innovation and Sustainability
- Basic Concept
 - Evidence Based Approach
 - With open(big) data, analysis, computer, network, statistics.
= “Collect, Analysis and Utilize”
 - Encourage students mobility
 - Joint Curriculum building and sharing
- Areas of study
 - [Energy and Environment]
 - [Health Environment]
 - [Disaster and Security]
- Milestones
 - Form a Consortium in March 2013
 - Conduct some trial internships/fieldworks/courses in 2013
 - Program starts from June 2014, enrollment starts April 2014.

AY 2012 Activities

- Students exchanges in AY2012
 - Internship in Japan : Malaysia-1 (GS), Indonesia-1 (UG)
 - Fieldwork in Japan : Indonesia -2 (2 GS)
 - Fieldwork in Indonesia : 4 (2 UG, 2GS)
 - Fieldwork in Cambodia: 3 (3 GS)
- 1st Consortium Meeting in March, 2013
 - 17 participants from ITB, USM, UM, CU, HUST, UP



AY2013 Activities - Programs

- Students exchange in AY 2013
 - 31 Keio students go to ASEAN (including 12 expected), 12 faculty trips.
 - 25 partner students to Japan/ASEAN (including 11 expected).
- EBA Open Seminar
 - 1st in July, monthly from September 2013 to March 2014.
- Courses from Keio
- Fieldworks
 - Kyushu, Japan (environment) organized by Keio University: Aug 2 ~ 9, 2013
 - Yogyakarta, Indonesia (disaster) organized by Keio University and ITB (TBD) : March 2014
- Internships
 - Technology Internships : YAMAHA
 - Entrepreneurship Internship : NTT Data



Courses in FALL 2013

COURSE	TITLE	CATEGORY	LECTURER / UNIVERSITY
CORE	Management of Emerging Business	Social Innovation	Prof. Jiro Kokuryo, Mr. Masaki Umejima / KEIO
CORE	Internet Measurement and Data Analysis	Advanced IT	Dr. Kenjiro Cho / KEIO
SPECIALIZED	Social Security Policy (Disaster)	Disaster and Security	Dr. Satoko Oki / KEIO
SPECIALIZED	History of City and Living Environment	Energy and Environment	Dr. Naoto Nakajima / KEIO
PRACTICAL	Science, Technology and Culture	Culture	Prof. Kyoko Inoue / KEIO
PRACTICAL	Introduction to Japanese Language	Culture	TBD

Courses/Workshops

Learning/Teaching Style

	Learning Style	Teaching Style
A. Student Visit	Visit to a partner to take courses/Workshops <u>together with other course students</u>	Teach in home university
B. Faculty Visit	Take courses/workshops in home university from the visiting faculty member	Visit to partners to teach courses
C. Remote-Classroom	Take courses/workshops in home classroom <u>connected to each other</u>	Co-teaching in home universities / Teaching to all classrooms
D. Web-Class	Take courses/workshops on the web individually	Teach through the web video conf to students from partners.
E. E-course	Take archived courses	Teach in the class, recorded
F. E-Workshop	Take on-line hands-on workshop	Create a special hands-on self-learning program by the consortium

EBA Online Courses



Dr. Oki to [EBA 2013 - S01 Social Security Policy \(Dis](#)
Happy New Year! and Welcome to my BOSAI class!
I am Satoko Oki, a Japanese seismologist, and am very
Tomorrow is the last class for my BOSAI lecture course,
and have questions or comments from you. See you the

Jan 7, 2014 · 6 Replies · 10 Reactions

[Show more replies...](#)



Carla Mae A. · Jan 8, 2014

Hi! Im currently having the same concern :O In the letter



Benjamin Jonah M. · Jan 8, 2014

Same here. Already checked the eba consortium site, a



Me · Jan 10, 2014

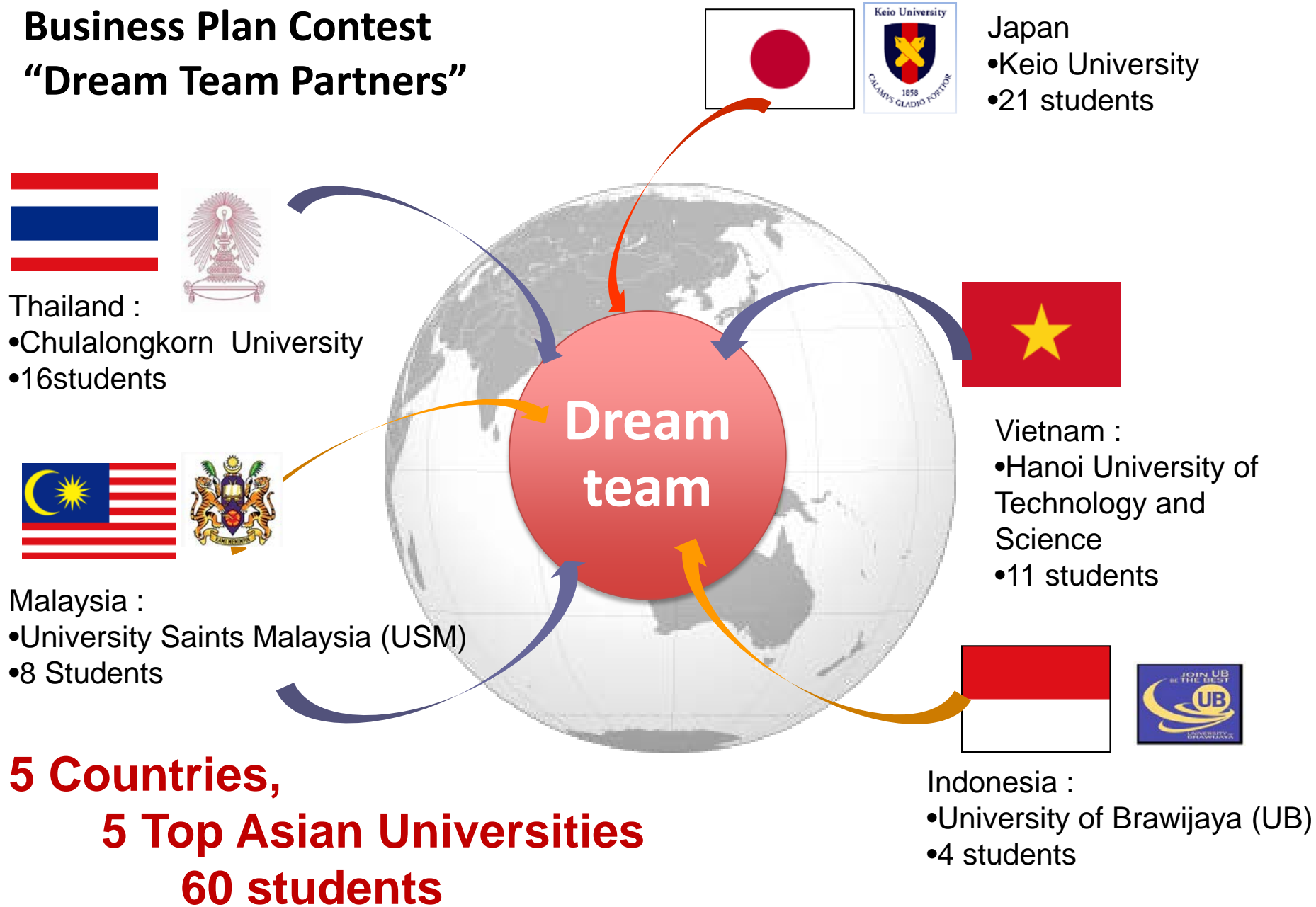
Very sorry about the live session confusion. We only ser
you could join the session from the classroom at UP!

Type a reply...



Courses are offered online : self-paced + real-time discussion

例：SFC学部・大学院授業“ベンチャー経営論” Business Plan Contest “Dream Team Partners”



Fieldwork/Internship styles

	Students	Host university
A	Students are coming from several partners to join a fieldwork program.	Create a fieldwork program by a university faculty to accommodate students from partners
B	Partner university form a group of student to visit to the fieldwork.	Host a fieldwork group from partners
C	Students apply to the program individually	Coordinate with industry/NPO/NGO in each country for students
D	:	:
	:	:

Fieldwork at Minamata, Kyushu Japan

14 ASEAN students + 10 keio U. Students



AY2013 Activities - Operation

- **Steering**
 - Formalization of the Consortium – MoU and LOI : on going
 - Students acceptance : Keio created student category for Undergraduate students to issue VISA.
 - 2nd meeting in March 2014
- **Coordinators**
 - Monthly coordinators meeting to exchange status and ideas
- **Linkage with Industry**
 - Internship Partners Consortium – formed in Nov 2013

Plan in 2014 (tentative)

- Student enrollment in April 2014
- Program starts from June 2014
- Program includes;
 - Courses from all partners
 - Fieldwork in both Japan and partner countries
 - Internships both in Japan and ASEAN countries
- Certificates
 - Component Certificates for Course,, Fieldwork and Internship
 - Program Certificate for “**Resilience, Innovation and Sustainability**” by accumulating component certificates
- Students Mobility
 - Students from ASEAN come to Japan (June or July) as a part of the first program, and internships in Japan.
 - Students from Japan go to ASEAN area for fieldworks and internship, also work with students from ASEAN in the fieldwork in Japan.



Thank you

www.eba-consortium.asia

www.facebook.com/EBAConsortium