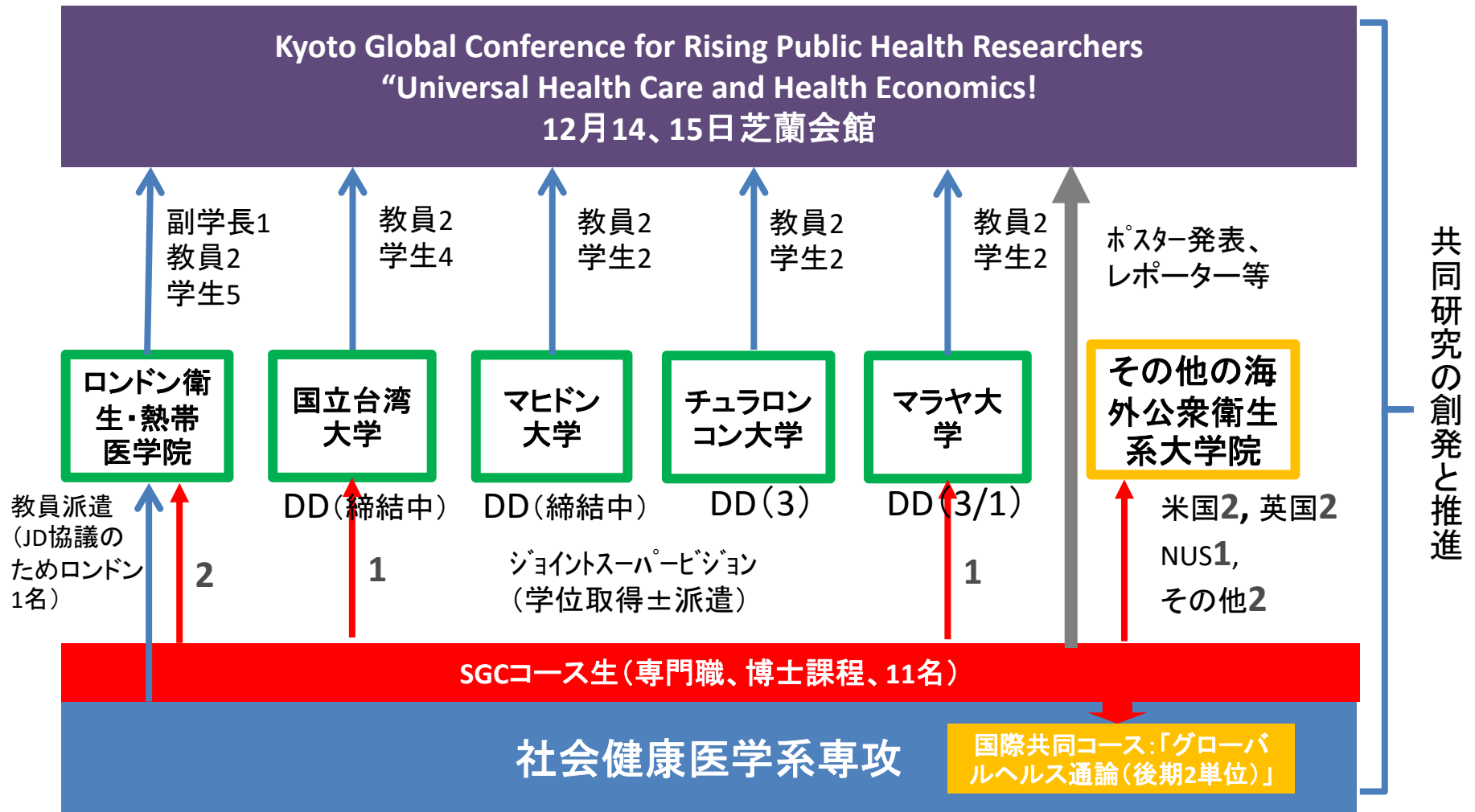


パブリックヘルスコース:2016年度SGC事業進捗(1350万円+約630万円)

資料11-1

2016年9月16日時点

- (1)国際オフィスの継続設置(助教1、事務員1)
- (2)教育/広報の国際化:授業教材の翻訳(878枚、2015年度は1740枚)、講義OCW化(既2、予定3)
- (3)国際共同プログラム



Summary Report for Super Global University (SGU) Kyoto University School of Public Health (as of September 2016)

① KUSPH Class materials translation 878ppt

② OCW

2016	Class	Recording status
Spring semester	Infectious Disease Epidemiology (感染症疫学)	Completed
Fall semester	Global Health (グローバルヘルス通論)	Recording scheduled
	Game for health: Introduction to serious game for health promotion (ヘルスプロモーションにおけるゲームの応用)	Recording scheduled
	Social entrepreneurship and global health (社会起業とグローバルヘルス)	Recording scheduled

③ 2016 Masters' Double Degree Memorandum of Understanding : In process

- National Taiwan University, College of Public Health
- Mahidol University, Faculty of Public Health

④ 2016 Kyoto Global Conference (KGC) for Rising Public Health Researchers

Theme: "Health Economic and Universal Health Coverage"

Date: December 14-15, 2016

Venue: Shirankaikan, Kyoto University

Invitations confirmed - 資料 11-3

⑤ 2016 Super Global Course (SGC)

Participants - 資料 11-4

2016 KGC participants from partners (as of September 7, 2016)

	Institution	Participant	Tentative title of talk
2 Keynote speakers (30 mins keynote speech)	LSHTM WHO Kobe Centre	Professor Anne Mills XXXXXXXX	
5 Expert speakers (25 mins oral presentation + 5 mins Q/A)	CU LSHTM MU NTU UM	Professor Sathirakorn Pongpanich Professor John Cairns Associate Professor Sukhontha Kongsil Professor Ya-Wen Cheng Professor Maznah Dahlui	USC coverage in Malaysia with our current healthcare financing system and compare with the proposed national health insurance – the pro and cons
5 Rising researchers (20 mins oral presentation)	CU LSHTM MU NTU UM	Dr. Somdeth Bodhisane Dr. Jenny Cresswell Dr. Sukhontha Siri Dr. Hsien-Ho Lin Dr. Sanjay Rampal	The Impact of Community Based Health Insurance in Enhancing Better Accessibility and Lowering the Chance of Having Financial Catastrophe Due to Health Service Utilization: A Case Study of Savannakhet Province, Laos Utilization of reproductive health services: time trends & equity Situation and factors associated with cognitive impairment among elderly people, northeast Thailand Tuberculosis control in the era of sustainable development goals CEA of Breast Cancer Screening in Malaysia: A sequential screening strategy of clinical breast examination and mammography
15 students (Poster presentation)	CU LSHTM MU NTU UM	Prichavijy Promjak Wachiraporn Wilaiwan Rachel Braithwaite Noemia Siqueira-Filha Daiane Machado Katherine Theiss-Nyland Kerry Wong Orapan Saringkan Ratchaya Jirapong Chih-Hsiang Shun Yi-Lun Tsai Po-Wei Chu Chia-Lin Tseng (personal payment) Roshidi Ismail Seow Soo Huai	“Modified-Continuous Ambulatory Peritoneal Dialysis (CAPD) Patient’s Handling Process” among Healthcare Providers at Primary Care Level Status and Trend of Mobile Communication Devices and Applications Usages in Senior Citizens, Thailand: Case Study on Health Effects Ethnic differences in smoking in the Netherlands and the contribution of socio-economic factors: the HELIUS Study Costs of treatment of HIV/AIDS and HIV/tuberculosis co-infection in a referral hospital in the city of Recife, Brazil Providing universal health coverage in mental health settings: Impact of the Brazilian mental health services on suicide, hospitalisations by attempted suicide, by psychiatric and by alcohol problems. Investigating the gap between policy and practice in continuous distribution of LLINs through ANC and EPI The spatial dimension of health service access and coverage: systematic review of distance and travel time as barriers of attaining universal skilled care at childbirth in Sub-Saharan Africa Heavy Metals level in Serum of Residents Living Near the No. 6 Naphtha Cracking Complex Sources and consequences of the fear of malpractice among physicians in Taiwan Tuberculosis Disease Risk Assessment in DM Patients Schemes in Japan, Korea, and Taiwan from 1990 to 2014 Awareness of cancer warning signs and anticipated delay in help seeking: Results from a cross-sectional study in multi-ethnic Malaysia

First name	Middle name	Family name	Gender	Nationality	Department at Kyoto University School of Public Health (KUSPH)	Current and degree and level at KUSPH	Name(s) of overseas collaborator(s)	Country(ies) of overseas collaborator(s)	Full name, title, and affiliation of co-supervisor(s)
Yukiko	N/A	Tateyama	Female	Japanese	Global Health and Socio-epidemiology	PhD Year 2	Institute of Economic and Social Research, The University of Zambia (INESOR)	Zambia	Professor. Mubiana Macwan'gi, PhD, Director of Institute of Economic and Social Research, The University of Zambia
Ayako	N/A	Kohno	Female	Japanese	Health Informatics	PhD Year 1	University of Malaya, Faculty of Medicine, Department of Social and Preventive Medicine	Malaysia	Professor Maznah Dahlui, PhD, Head of Department, Department of Social and Preventive Medicine, Faculty of Medicine, University of Malaya Dr. Nik Daliana Nik Farid, MBBS (Adelaide), MPH (Malaya), DrPH (Malaya) Medical Lecturer and Public Health Specialist, Department of Social and Preventive Medicine, Faculty of Medicine, University of Malaya
CHIAWEN	N/A	WANG	Female	TAIWAN	Global health and Socio-epidemiology	PhD Year 2	National Taiwan University	Taiwan	Chang-Chuan Chan, M.Sc., Ph.D., Director, Global Health Center, College of Public Health, National Taiwan University
Phayong	N/A	Thepaksorn	Male	Thai	Health and Environmental Sciences	MPH Year 2	University of Michigan and University of Washington	United States of America	Prof. Michael Yost, PhD, Department of Environmental and Occupational Health Sciences, University of Washington School of Public Health, Seattle, USA and Assist.Prof. Richard L.Neitzel, PhD, Department of Environmental Sciences and Risk Science Center, University of Michigan School of Public Health, Ann Harbor, USA.
Calistus	N/A	Wilunda	Male	Kenyan	Pharmacoepidemiology	DrPH Year 2	Dr. Marta Blangiardo	United Kingdom	Dr. Marta Blangiardo, PhD, Senior Lecturer, Department of Epidemiology and Biostatistics, School of Medicine, Imperial College London
Omid	N/A	Dadras	Male	Iran	Global Health and Socioepidemiology	MPH Year 2	London School of Hygiene and Tropical Medicine	UK	Ms Lorna Gibson, MPhil, Faculty of Epidemiology and population health, London School of Hygiene and Tropical Medicine
Mohammad	Sedq	Hazratzai	Male	Afghan	Global Health and Socio-epidemiology	DrPH Year 1	University of California, San Francisco	United States of America	Mitchell D. Feldman, MD, MPhil, FACP Professor of Medicine and Interim Chief, DGIM Associate Vice Provost, Faculty Mentoring Co-Editor in Chief, Journal of General Internal Medicine
Anita	Nyaboke	Ongosi	Female	Kenyan	Global Health and Socio-epidemiology	PhD Year 2	University of Eldoret	Kenya	Charlotte Serrem, MSc, PhD (Senior Lecturer, University of Eldoret, Department of Consumer Science, School of Agriculture and Biotechnology, Kenya)
Takahashi	N/A	Shinomi	Female	Japanese	Global Health and Socio-epidemiology	MPH Year 2	National University of Singapore	Singapore	PhD CPsychol, Associate Professor, Department of Psychology, National University of Singapore
Yoshitaka	N/A	Nishikawa	Male	Japan	Health Informatics	PhD Year 1	Imperial College London	United Kingdom	Dr. Susan Hodgson, PhD, MSc, BSc, Lecturer in Environmental Epidemiology & Exposure Assessment, Department of Epidemiology and Biostatistics School of Public Health, Faculty of Medicine, Imperial College London Mr. Shuhei Nomura, MSc, Department of Epidemiology and Biostatistics School of Public Health, Faculty of Medicine, Imperial College London
Christina	Abduljabar	El-saaidi	Female	Yemeni	Global Health and Socio-epidemiology	PhD Year 4	London School of Hygiene and Tropical Medicine	United Kingdom	Professor at the Department of Medical Statistics, Faculty of Epidemiology and Population Health, London School of Hygiene and Tropical Medicine
Remarks	Travel completed	Travel planned	No travel needed						